

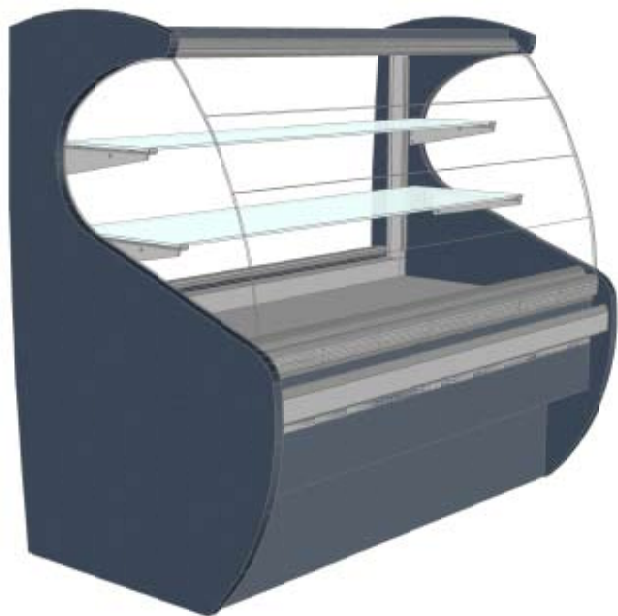
# Arctica Urban Market Series

Presentation is Everything™

## Stealth

- RHS-38-54-OS      38.25"L x 35.63"D x 54.06"H
- RHS-48-54-OS      47.81"L x 35.63"D x 54.06"H
- RHS-57-54-OS      57.38"L x 35.63"D x 54.06"H
- RHS-76-54-OS      76.50"L x 35.63"D x 54.06"H
- Self-Contained       Remote       Dry

Arctica recommended for:  
Bakery.



Item #:	_____
Project:	_____
Date:	_____

Stealth	Standard Specifications:	Options:
<b>Construction</b>	<input type="checkbox"/> High grade plywood <input type="checkbox"/> Aluminum base structure <input type="checkbox"/> Levelers <input type="checkbox"/> Tilt-out front glass	
<b>Interior Finishes</b>	<input type="checkbox"/> Epoxy powder painted (black)	<input type="checkbox"/> Epoxy powder painted (white) <input type="checkbox"/> Brushed stainless steel
<b>Shelves</b>	<input type="checkbox"/> 1/4" tempered glass	<input type="checkbox"/> Painted wire <input type="checkbox"/> Stainless steel <input type="checkbox"/> Additional light
<b>Aluminum Trim</b>	<input type="checkbox"/> Satin finish	<input type="checkbox"/> Chrome anodized <input type="checkbox"/> Brass anodized <input type="checkbox"/> Epoxy powder painted (black) <input type="checkbox"/> Epoxy powder painted (white)
<b>End/Divider Glass</b>	<input type="checkbox"/> 1/4" tempered glass	<input type="checkbox"/> 1/4" tempered glass mirrored
<b>Sliding Doors</b>	<input type="checkbox"/> Pike glass	<input type="checkbox"/> Pike glass with mirror film
<b>End Panels/Decorboard/ Kickboard</b>	<input type="checkbox"/> Plastic laminate on plywood	
<b>Equipment</b>	<input type="checkbox"/> Defogging system	

1.800.839.5536

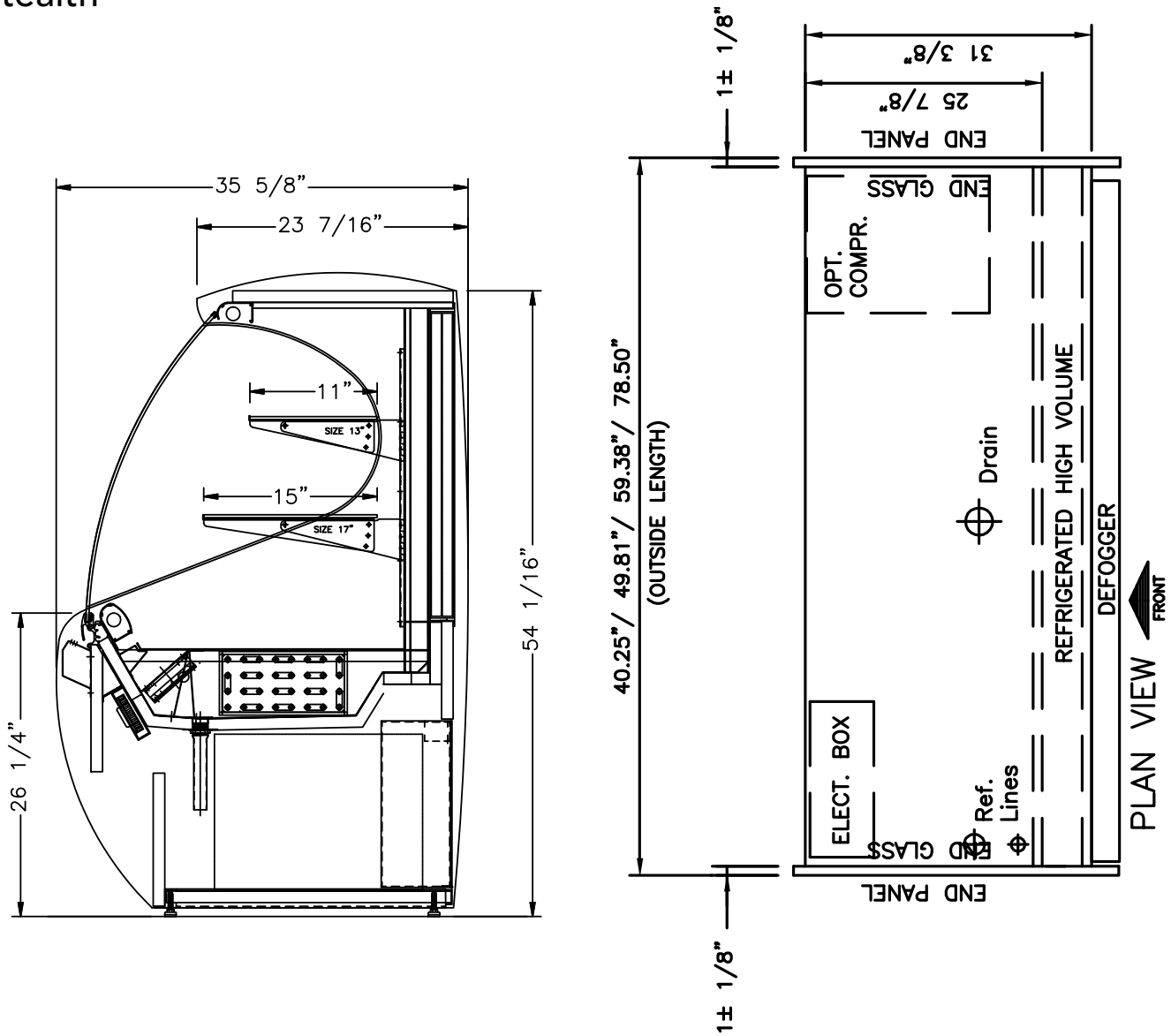
www.arctica.ca



# Arctica Urban Market Series

Presentation is Everything™

## Stealth



Model	Length (inches)	Length (millimeters)	Voltage	Amps (Remote)	Amps (Self-Contained)	Amps (Dry)
RHS-38-54	38.25"	972mm	115V / 1 / 60	2.1	11.5	1.0 for all models; a single 115V hook-up required for all dry models.
RHS-48-54	47.81"	1,214mm	115V / 1 / 60	2.3	13.0	
RHS-57-54	57.38"	1,457mm	115V / 1 / 60	2.7	13.4	
RHS-76-54	76.50"	1,943mm	115V / 1 / 60 230V / 1 / 60	3.6	3.6 8.7	

SPECS: aluminum support frame; leveling legs; brushed stainless steel refrigeration compartment; epoxy painted interior; anodized aluminum trim; .25 tempered shelves and front curved glass; tilt-out front glass standard.; lights with spectrum sleeves; 1" ply finished millwork; self-contained (R134a) with hot gas evaporator or remote; refrigerated cases are fitted with a defogging system that will keep the front glass clear of moisture in a controlled environment not exceeding 75°F and 55% relative humidity. ETL sanitation listed to NSF Standard 2, 4 and 7.

